

Glimmer Glass Bridge – Interpretive Exhibits Concepts



January 12, 2026

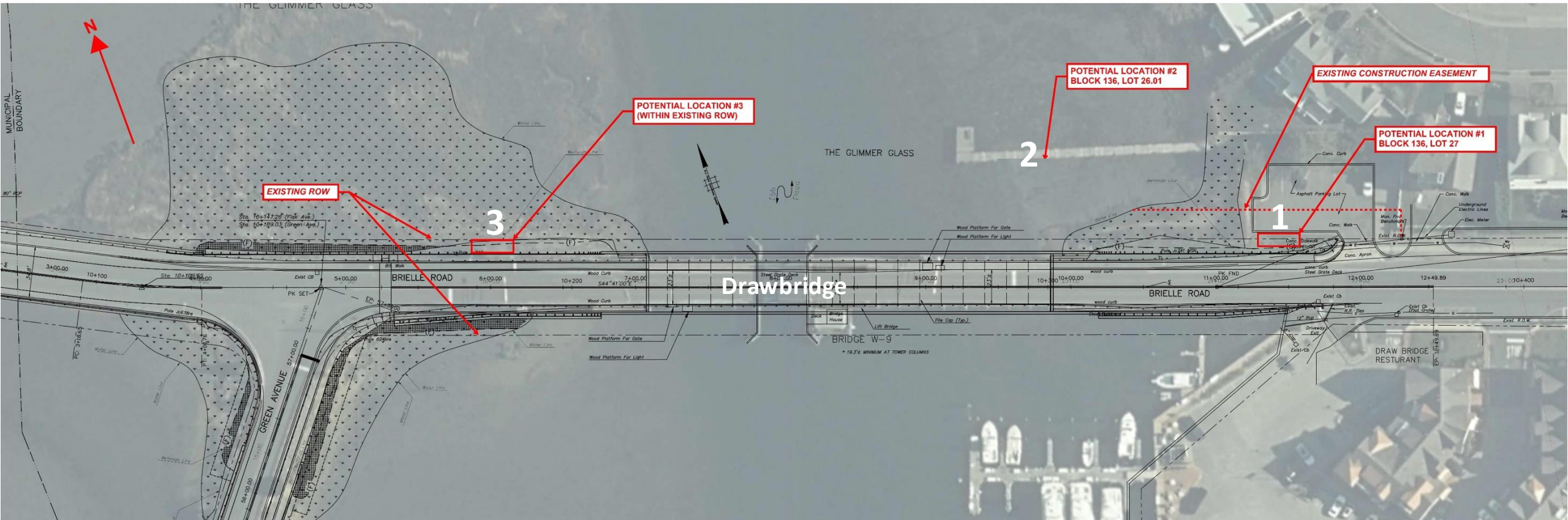
Matrix – Four Potential Exhibit Locations

Potential Location	Description	Impacts			
		Exposure/Access	View of Bridge W-9	ROW	Environmental
1	On-grade slab adjacent to fishing pier parking lot on Block 136, Lot 27	Medium exposure as it must be passed to cross bridge, but likely cannot provide access from the sidewalk. ADA access possible from parking lot	Limited view of draw span	Partially within public ROW and partially within existing roadway easement on Manasquan owned property	Partial impacts to Green Acres encumbered property
2	On the fishing pier on Block 136, Lot 26.01	Limited exposure as few people use the pier	Full view of draw span	Within existing riparian grant owned by Manasquan	Impacts to Green Acres encumbered property and impacts to tidelands
3	On-grade slab adjacent to sidewalk at Glimmer Glass Island within the existing ROW	Maximum exposure as it can be accessed from bridge sidewalks and passed to cross bridge	Limited view of draw span	Within public ROW	Minor impacts to wetlands
4	Fisherman's Cove Conservation Area/Dog Beach	Limited exposure to dog walkers and recreationalists using a remote parking lot in season. No direct access to bridge.	No view of draw span	Within county-owned conservation area	Impacts to Green Acres encumbered property and minor impacts to wetlands

Source: Monmouth County/Mott MacDonald, 2025

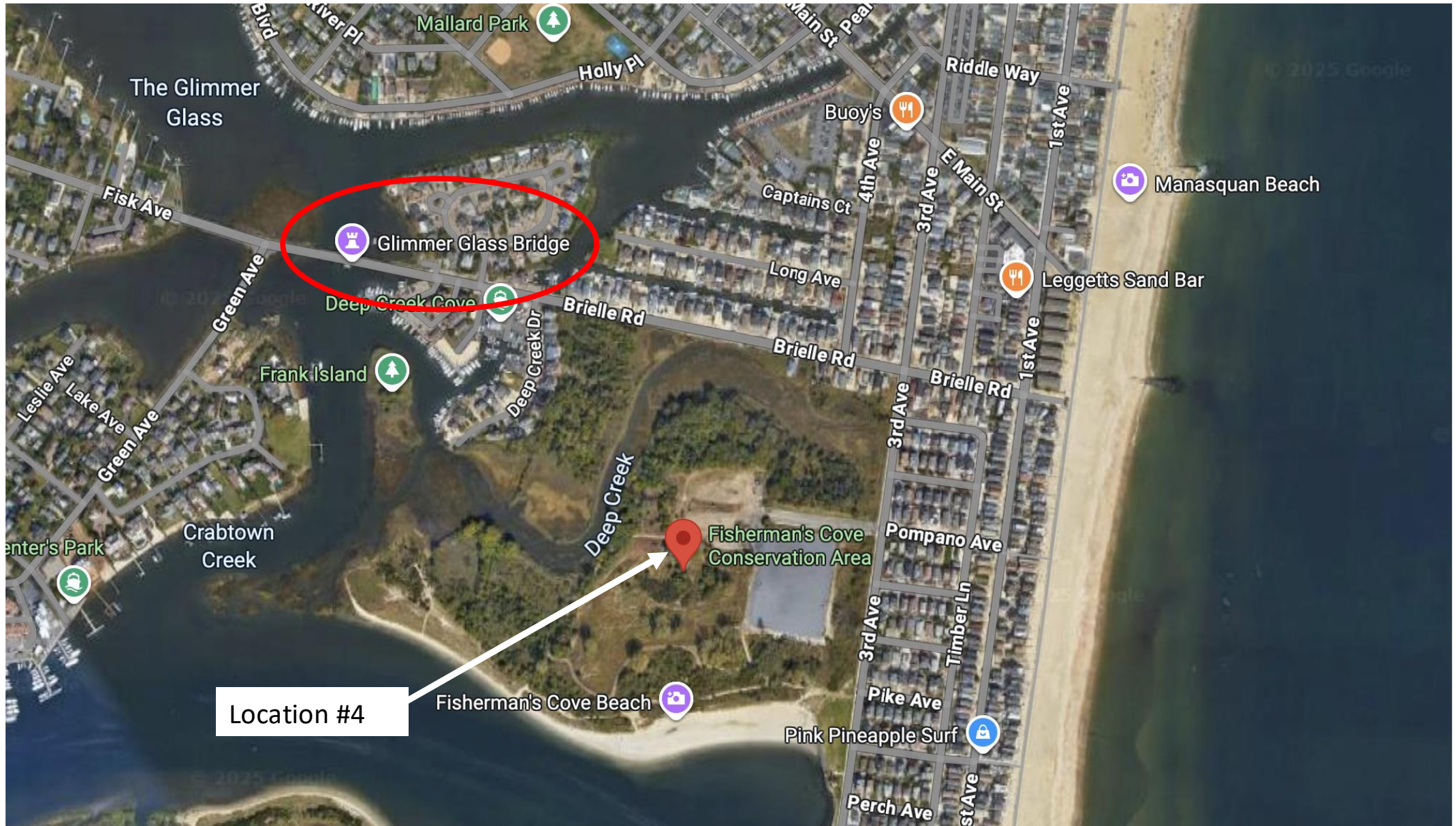
Location Map – Potential Exhibit Locations 1, 2 and 3

POTENTIAL LOCATIONS FOR DISPLAY OF SALVAGED COMPONENTS



Source: Monmouth County/Mott MacDonald, 2025

Location Map – Potential Exhibit Location 4



Location 1 – Adjacent to Fishing Pier Parking Lot



- Maximum of approximately 10 ft. x 30 ft. available within County easement



Location 2 – Existing Fishing Pier



- Not ideal for display of salvaged machinery
- No railings and narrow, designed for fishing/boating, not viewing the bridge



Location 3 – Glimmer Glass Island



- Approximately 5 ft. x 25 ft. available within County right-of-way



Location 4 – Fisherman's Cove Conservation Area



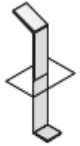
- Ample space near parking lot and trails for a display
- 0.5 mile from bridge by foot or car
- No views of bridge
- May lack handicap accessibility or require upgrades for accessibility depending on location



Exhibit Components – Interpretive Signage

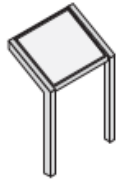
TS Series - Trailsides

Low to the ground, Trailsides are an excellent choice for plant ID markers, site markers, trail guides, and anywhere a small discreet sign is required.



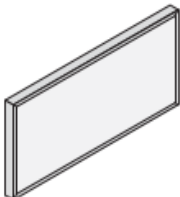
LP Series - Low Profile

The Low Profile base is the preferred style for NPS interpretive outdoor exhibits. Available in a variety of material finishes and sizes the base's simple, unadorned form makes it appropriate for any park landscape.



WM Series - Wall Mount

Wall Mount frames are designed to display information on vertical surfaces. Frames are available in a variety of materials and sizes.



UP Series - Uprights

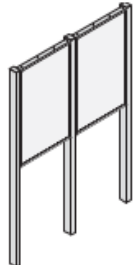
Designed to stand vertically so they attract attention, Upright bases typically provide practical information to visitors rather than site-specific interpretation. Like the Low Profile base, Upright bases are available in a variety of

material finishes and sizes. Bases can be fabricated as a single unit, double or triple inline unit, and tri-sided and four-sided units. The single unit and inline bases can be configured for one or two-sided display. All of the uprights, (in

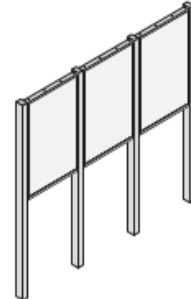
certain preset sizes) are available with or without a roof structure. Each base is designed to hold panels or other accessories including bulletin cases.



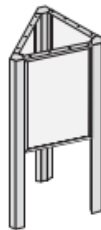
Upright Base



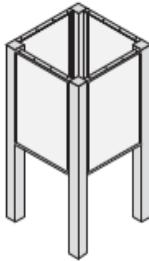
Upright Inline 2



Upright Inline 3



Upright Tri (Tri-Side)



Upright Quad (Four-Side)



Exhibit Components – Potential Salvaged Bridge Machinery



- Counterweight drum and linkage

Exhibit Components – Potential Salvaged Bridge Machinery



- Power shaft and sheaves

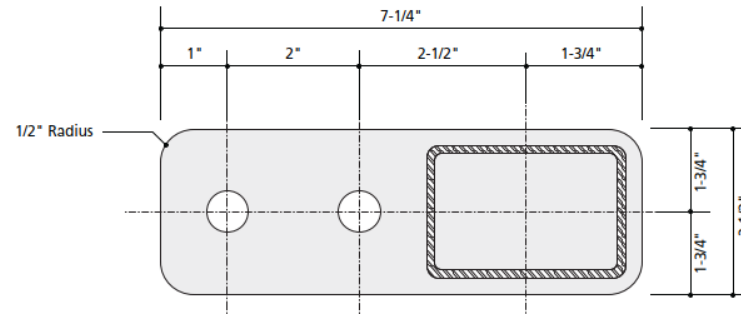
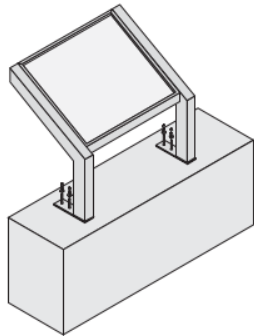
Exhibit Components – Why Not Salvage Tower?



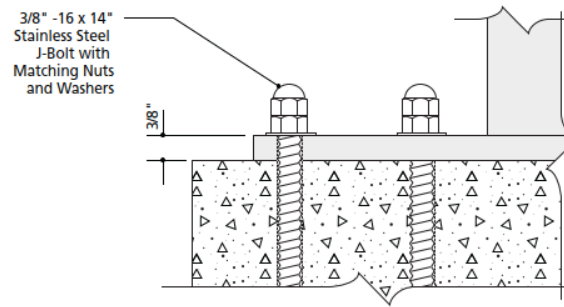
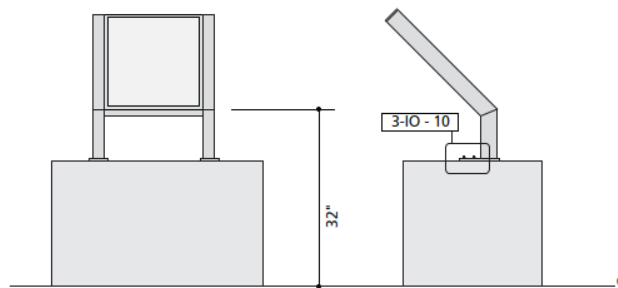
- Salvage of tower and track system in whole or part considered infeasible due to scale and wood materiality
- Insufficient space in county easements and right-of-way to reconstruct entire tower to support salvaged machinery. Also considered unnecessary since new bridge will have tower and operate similarly
- Existing wood is near end of life and would need to be replaced every 15-25 years due to the environment

Exhibit Components – Low Concrete Wall Mount

Low Profile Series Wall Cap Mount (CM)

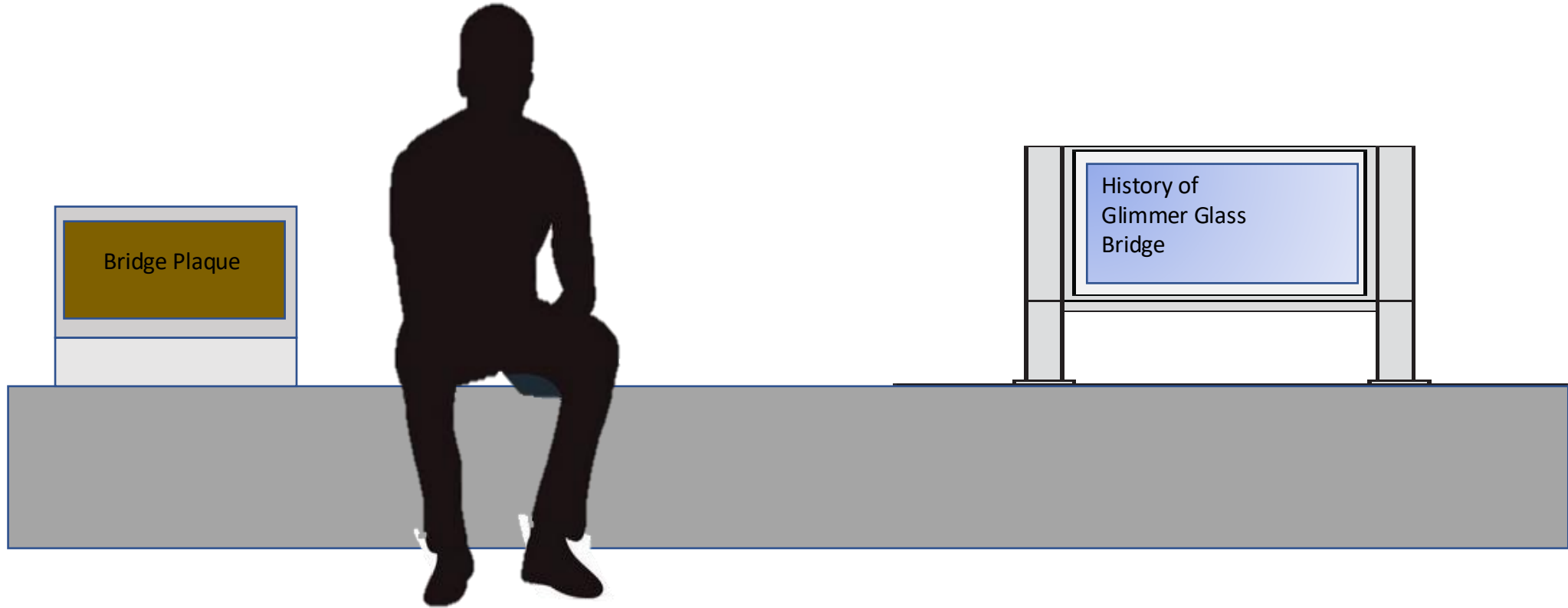


2-10 - 10 Baseplate Plan View
Scale: 1/2 Actual Size



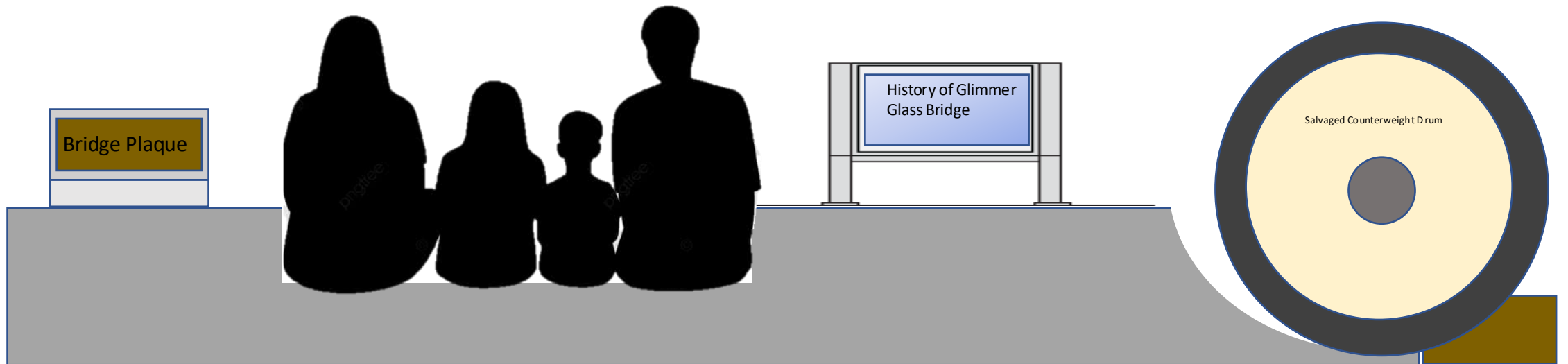
- Interpretive Panel with frame on low concrete wall
- Panel interprets bridge history with historic photographs and text
- Could be combined with low seat wall
- Could be combined with bronze builder's plaque
- Could be combined with salvaged machinery

Exhibit Concept A



*For concept only. Not to scale

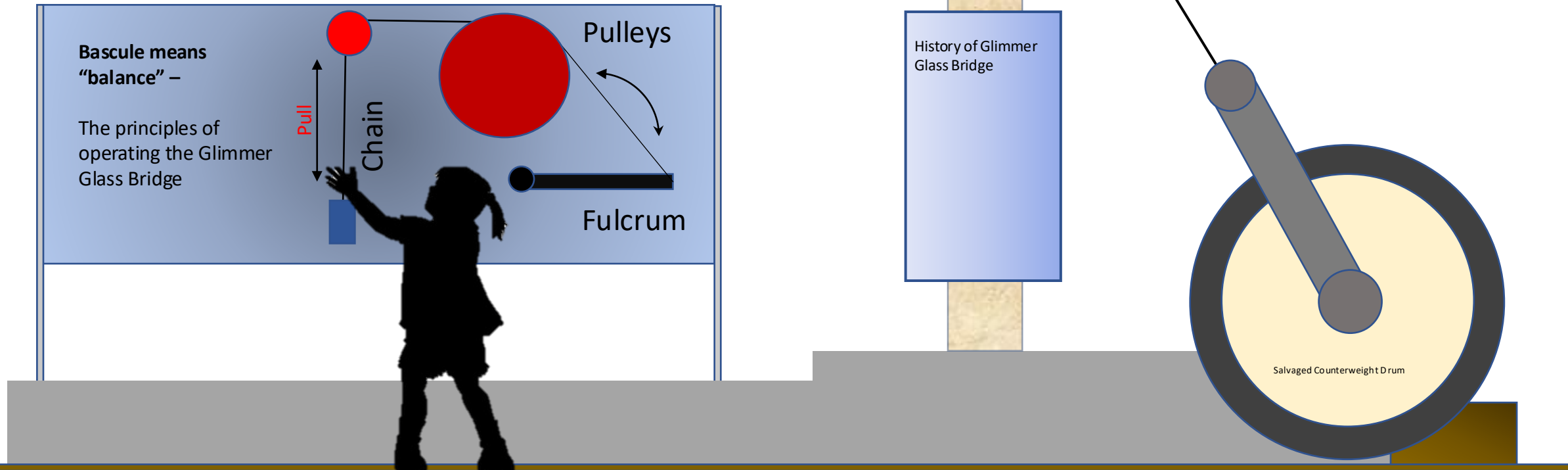
Exhibit Concept B



*For concept only. Not to scale

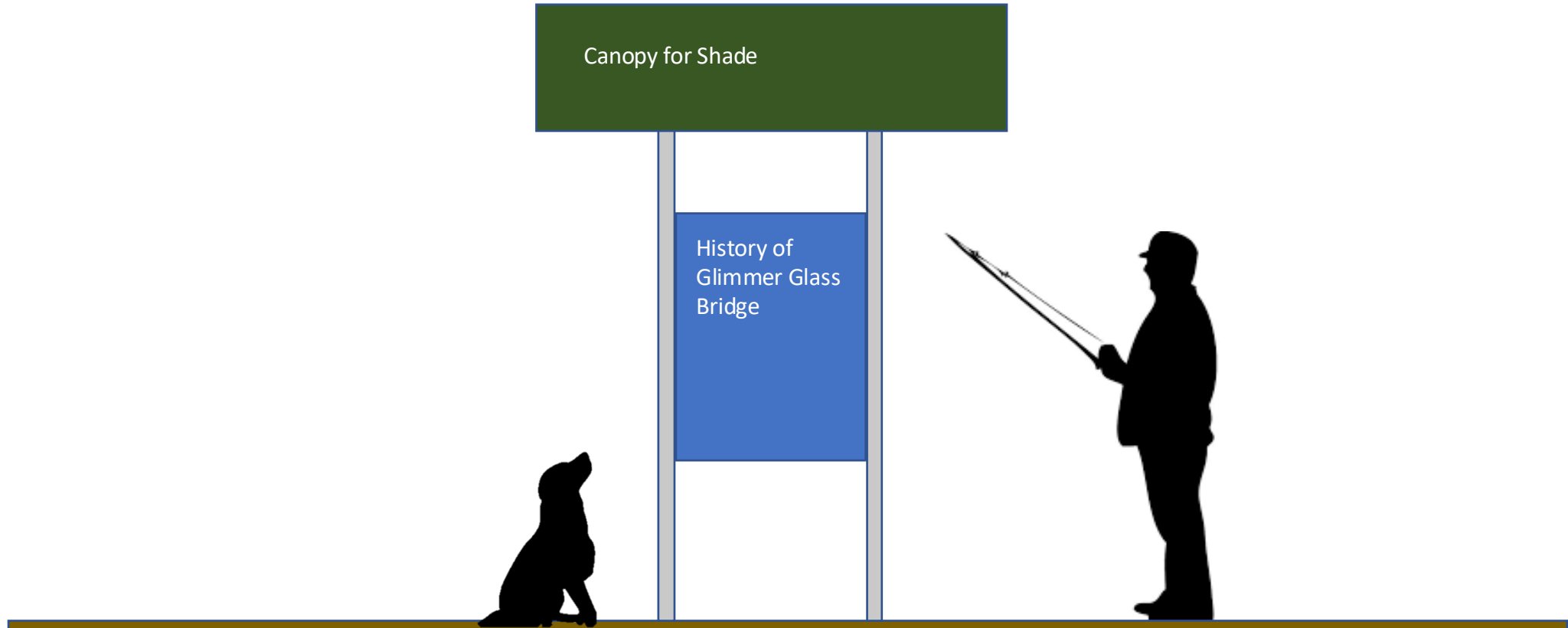
Exhibit Concept C

Smaller single-pan version of this hands-on wall with components illustrating the principles of leverage and counterweight could enhance on-site exhibit



*For concept only. Not to scale

Exhibit Concept D (Fishing Pier or Dog Park)



*For concept only. Not to scale